

PrepAwayTest

Pass Your Next Certification Exam Fast!

Everything you need to prepare, learn & pass your certification exam easily.

Login / Register

Shopping Cart (3)

Search...



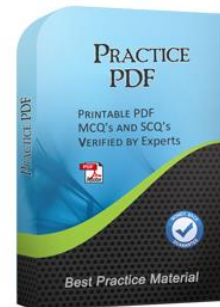
Online Test Engine

Instant Online Access, Test History and Performance Review, Supports Windows / Mac / Android / iOS, etc. →



Desktop Test Engine

Installable Software Application, Simulates Real Exam Environment, Supports MS Operating System, Practice Offline Anytime. →



PDF Format

Printable PDF Format, Prepared by IT Experts, Study Anywhere, Anytime, Free PDF Demo Available. →



Security & Privacy

We respect customer privacy. We use McAfee's security service to provide you with utmost security for your personal information & peace of mind.



365 Days Free Updates

Free update is available within 365 days after your purchase. After 365 days, you will get 50% discounts for updating.



Money Back Guarantee

Full refund if you fail the corresponding exam in 60 days after purchasing. And Free get any another product.



Instant Download

After Payment, our system will send you the products you purchase in mailbox in a minute after payment. If not received within 2 hours, please contact us.

<http://www.prepawaytest.com/>

Everything you need to prepare, learn & pass your certification exam easily.

1. Which method can be used to address variable-length dial plans?
- A. Overlap sending and receiving.
 - B. Add a prefix for all calls that are longer than 10-digits long
 - C. Use nested translation patterns to eliminate inter-digit timeout
 - D. Use the @macro on the route pattern
 - E. Use MGCP gateways, which support variable-length dial plans

Answer: **Exam : 642-457**

2. Refer to the exhibit.

Title : Implementing Cisco Unified Communications Manager, Part 2 v8.0 (CIPT2 v8.0)

The exhibit shows centralized Cisco Unified Communications Manager configuration components for TEHO calls to U.S. area code 408 from the U.K. The PSTN access code for the U.K. is 9 and 001 for international calls to the U.S. What should the TEHO-US route list configuration consist of?

- A. First route group should point only to the U.S. gateway. The second route group should point to the U.S. gateway.
- B. First route group should be only the local route group. The second route group should point to the U.S. gateway.
- C. First route group should be only the local route group. The second route group should be the local route group.
- D. First route group should be only the local route group. The second route group should be the local route group.
- E. No extra route groups should be configured.

Answer: for each site. The Cisco Unified Communications Manager will automatically forward the calls over the WAN if the destination directory number is not registered locally.

Answer: Refer to the exhibit.

3. Which two features require or may require configuring a SIP trunk? (Choose two.)

- A. SIP gateway
- B. Call Control Discovery between a Cisco Unified Communications Manager and Cisco Unified Communications Manager Express
- C. Cisco Device Mobility
- D. Cisco Unified Mobility
- E. registering a SIP phone

Answer: AB

NO.1 Which two are gatekeeper-controlled trunk options that support gatekeeper call administration control? (Choose two.)

- A. H.323
- B. H.245
- C. H.225
- D. intercluster
- E. intracluster

Answer: C,D

NO.2 Which interface can you use to configure alarms and traces in Cisco Unified Communications Manager?

- A. Cisco Unified Reporting
- B. Cisco Unified Serviceability
- C. Cisco Unified Communications Manager Administration
- D. disaster recovery system
- E. Cisco Unified OS Administration
- F. real-time monitoring

Answer: B

NO.3 Refer to the exhibit.

Which statement about the configuration between the Default and BR regions is true?

- A. Calls between the two regions can use either 64 kbps or 8 kbps.
- B. Calls between the two regions can use only the G.729 codec.
- C. Only 64 kbps will be used between the two regions because the link is "lossy".
- D. Both codecs can be used depending on the loss statistics of the link. When lossy conditions are high, the G.711 codec will be used.

Answer: B

NO.4 What is a prerequisite of AAR deployment?

- A. You must have a single distributed call processing deployment.

- B. Calls must be manually rerouted through the PSTN or other networks when Cisco Unified Communications Manager blocks a call due to insufficient location bandwidth.
- C. Calls must be automatically rerouted through the PSTN or other networks when Cisco Unified Communications Manager blocks a call due to insufficient location bandwidth.
- D. Clustering must be implemented over the WAN.
- E. You must have a centralized call processing deployment.

Answer: E

NO.5 Which action is performed by the Media Gateway Control Protocol gateway when it loses connectivity with the primary and backup Cisco Unified Communications Manager servers?

- A. The gateway continues to make an attempt to connect to the backup Cisco Unified Communications Manager server.
- B. The gateway falls back to the H.323 protocol for further call processing.
- C. The gateway continues with the MGCP call processing without any interruption.
- D. The gateway waits for the primary Cisco Unified Communications Manager server to come alive.
- E. All MGCP call processing is interrupted until the Cisco Unified Communications Manager servers are online.
- F. The MGCP calls are queued up until the Cisco Unified Communications Manager servers are online.

Answer: B

NO.6 Which two options for a Device Mobility-enabled IP phone are true? (Choose two.)

- A. The phone configuration is not modified.
- B. The roaming-sensitive parameters of the current (that is, the roaming) device pool are applied.
- C. The user-specific settings determine which location-specific settings are downloaded from the Cisco Unified Communications Manager device pool.
- D. If the DMGs are the same, the Device Mobility-related settings are also applied.

Answer: B,D

NO.7 Refer to the exhibit.

Locations-based CAC has been configured between HQ and the BR site. Assume that the priority queue has been provisioned correctly for three G.729 calls. What happens when the fourth call is placed from HQ to BR?

- A. The call will get through via the WAN, but it will experience poor audio quality.
- B. The call will fail.
- C. The call will be queued until one of the existing calls drop.
- D. The call will get through without any issues.

Answer: B

NO.8 How many hosted DN patterns per cluster does Cisco Unified Communications Manager allow you to configure?

- A. 500

- B. 1000
- C. 1500
- D. 2000
- E. 2500
- F. 5000

Answer: D

NO.9 With Media Gateway Control Protocol configuration on the voice gateway, which three types of messages are involved in the call flow between the call agent and the voice gateway? (Choose three.)

- A. audit endpoint
- B. modify endpoint
- C. create connection
- D. delete notification
- E. restart in progress
- F. end connections

Answer: A,C,E

NO.10 Refer to the following exhibit.

The screenshot shows the 'SAF Forwarder info' configuration page. The fields are as follows:

SAF Forwarder Info	
Name*	HQ_SAF_FWDER
Description	
Client Label*	HQ_SAF
SAF Security Profile*	SAF_SEC_Prof. ▼
SAF Forwarder Address*	10.1.111.1
SAF Forwarder Port*	5050
<input checked="" type="checkbox"/> Enable TCP Keep Alive	
<input type="checkbox"/> Show Advanced	

Which Cisco IOS SAF Forwarder configuration is correct?

A

```
router eigrp SAF
|
| service-family ipv4 autonomous-system 1
| |
| | topology base
| | external-client HQ_SAF
| | exit-sf-topology
| | exit-service-family
| |
| |
| |
| |
| |
| service-family external-client listen ipv4 5050
| external-client HQ_SAF
| username SAFUSER
| password SAFPASSWORD
| keepalive 3600000
```

B

```
router eigrp SAF
|
| service-family ipv4 autonomous-system 1
| |
| | topology base
| | external-client HQ_SAF_FWDER
| | exit-sf-topology
| | exit-service-family
| |
| |
| |
| |
| |
| service-family external-client listen ipv4 5050
| external-client HQ_SAF
| username SAFUSER
| password SAFPASSWORD
| keepalive 3600000
```

C

```
router eigrp SAF
|
| service-family ipv4 autonomous-system 1
| |
| | topology base
| | external-client HQ_SAF
| | exit-sf-topology
| | exit-service-family
| |
| |
| |
| |
| |
| service-family external-client listen ipv4 5050
| external-client HQ_SAF_FWDER
| username SAFUSER
| password SAFPASSWORD
| keepalive 3600000
```

D

```
router eigrp SAF
|
| service-family ipv4 autonomous-system 1
| |
| | topology base
| | external-client HQ_SAF_FWDER
| | exit-sf-topology
| | exit-service-family
| |
| |
| |
| |
| |
| service-family external-client listen ipv4 5050
| external-client HQ_SAF_FWDER
| username SAFUSER
| password SAFPASSWORD
| keepalive 3600000
```

A. Exhibit A

- B. Exhibit B
- C. Exhibit C
- D. Exhibit D

Answer: A

Explanation:

Incorrect answer: BCD

Summary steps to configure IOS SAF forwarder is given below

- 1.enable
- 2.configure terminal
- 3.router eigrp virtual-instance-name
- 4.service-family {ipv4 | ipv6} [vrf vrf-name] autonomous-system autonomous-system-number
- 5.topology base
- 6.external-client client_label
- 7.exit-sf-topology
- 8.exit-service-family
- 9.exit
- 10.service-family external-client listen {ipv4 | ipv6} tcp_port_number
- 11.external-client client-label
- 12.username user-name
- 13.password password-name
- 14.keepalive number

NO.11 When multiple Cisco Extension Mobility profiles exist, which actions take place when a user tries to log in to Cisco Extension Mobility?

- A. The login will fail because only a single Cisco Extension Mobility profile is allowed.
- B. The user must select the desired profile.
- C. The user must login to both profiles in the order they are presented.
- D. The user may login to both profiles in any order.
- E. Login will only be allowed to multiple profiles if the service parameter Allow Multiple Logins is enabled.

Answer: B

Explanation:

Incorrect answer: ACDE

Users access Cisco Extension Mobility by pressing the Services or Applications button on a Cisco Unified IP Phone and then entering login information in the form of a Cisco Unified Communications Manager UserID and a Personal Identification Number (PIN). If a user has more than one user device profile, a prompt displays on the phone and asks the user to choose a device profile for use with Cisco Extension Mobility. Link:

http://www.cisco.com/en/US/docs/voice_ip_comm/cucm/admin/8_6_1/ccmfeat/fsem.html

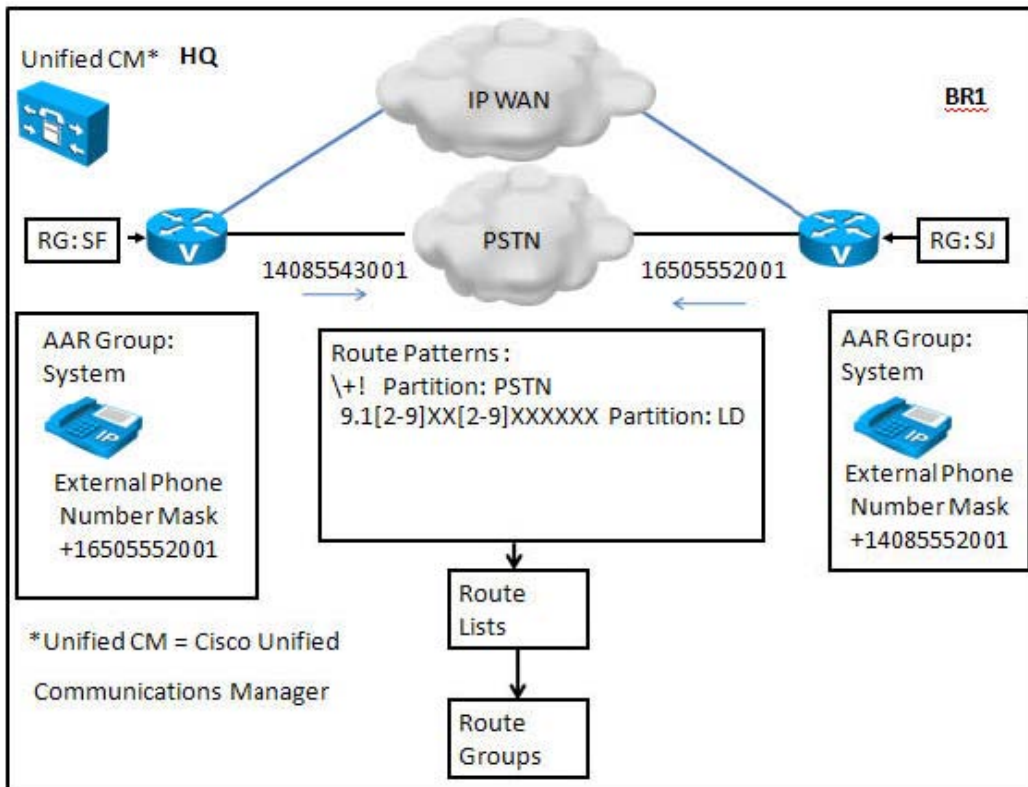
NO.12 Which ability does the Survivable Remote Site Telephony feature provide?

- A. a means to allow the local site to continue to send and receive calls in the event of a WAN failure

- B. a means to route calls on-net through other sites during high utilization periods
- C. a method that allows for backup calls in the event that your gateway fails
- D. the ability to force a call out of a certain trunk when the Cisco Unified Communications Manager is being upgraded

Answer: A

NO.13 Refer to the exhibit.



The HQ site uses area code 650. The BR1 site uses area code 408. The long distance national code for PSTN dialing is 1. To make a long distance national call, an HQ or BR1 user dials access code 9, followed by 1, and then the 10-digit number.

Both sites use MGCP gateways. AAR must use globalized call routing using a single route pattern. Assume that all outgoing PSTN numbers are localized at the egress gateway as shown in the exhibit. Which partition should be configured in the AAR CSS applied at the phones?

- A. PSTN partition
- B. LD partition
- C. The HQ AAR CSS must include a partition assigned to route pattern 91408XXXXXXX. The BR1 AAR CSS must include a partition assigned to route pattern 91650XXXXXXX.
- D. AAR CSS must contain translation pattern 9.1[2-9]XX[2-9]XXXXXX for each site that must be globalized. Otherwise the called numbers will not be localized at the egress gateway.

Answer: A

NO.14 Which device is used to connect to the H.323 gatekeeper?

- A. H.323 gateway
- B. SIP trunk

- C. H.323 trunk
- D. MGCP gateway

Answer: C

NO.15 When implementing a dial plan for multisite deployments, what must be present for SRST to work successfully?

- A. dial peers that address all sites in the multisite cluster
- B. translation patterns that apply to the local PSTN for each gateway
- C. incoming and outgoing COR lists
- D. configuration of the gateway as an MGCP gateway

Answer: B

NO.16 In a cluster-wide deployment, what is the maximum number of Service Advertisement Framework forwarders to which the Cisco Unified Communications Manager can connect?

- A. 1
- B. 2
- C. 3
- D. 4
- E. 6
- F. as many as are configured

Answer: B

NO.17 Refer to the exhibit.

The screenshot displays two configuration windows from the Cisco Unified Communications Manager (CUCM) interface.

The top window is titled "CCD Requesting Service". It contains the following fields:

- Name*: HQ_REQ_SVC
- Description: (empty)
- Route Partition: SAF_Pt
- Learned Pattern Prefix: +
- PSTN Prefix: 000
- Available SAF Trunks: SAF_Trunk_HQ_ICT
- Selected SAF Trunks: SAF_Trunk_HQ_SIP
- Activated Feature:

The bottom window is titled "RTMT Learned Pattern". It shows a table of learned patterns for node "CUCM801Pub1".

Pattern	TimeStamp	Status	Protocol	AgentId	IP Address	ToDID	CUCMNodeId
3XXX	2010/05/07 14:52:06	Reachable	SIP	CID10.1.5.11	10.1.5.11(5060)	0:44228822	1

When the user of a phone registered to the Cisco Unified Communications Manager places a call to

3001 when the SAF network is down, what happens?

- A. The call fails.
- B. The call is rerouted to the PSTN with the constructed PSTN number as +442288223001
- C. The call is rerouted to the PSTN with the constructed PSTN number as 442288223001
- D. The call is rerouted to the PSTN with the constructed PSTN number as 0002288223001
- E. The call is rerouted to the PSTN with the constructed PSTN number as +0002288223001

Answer: A

Explanation:

Incorrect answer: BCD

When the SAF forwarder loses network connection with its call-control entity, the SAF forwarder withdraws those learned patterns that were published by the call control entity. In this case, CCD requesting service marks those learned patterns as unreachable via IP, and the calls gets routed through the PSTN gateway. Link:

http://www.cisco.com/en/US/docs/voice_ip_comm/cucm/admin/8_6_1/ccmfeat/fscallcontrol/discovery.html

NO.18 Which command displays the detailed configuration of all the Cisco Unified IP phones, voice ports, and dial peers of the Cisco Unified SRST router?

- A. show call-manager-fallback all
- B. show dial-peer voice summary
- C. show ephone summary
- D. show voice port summary

Answer: A